



Elevator Air Conditioner



Elaborate design
better applicability



Cooling capacity
2000/3000W



Eco-friendly
refrigerant R410A



43°C

Max ambient temp



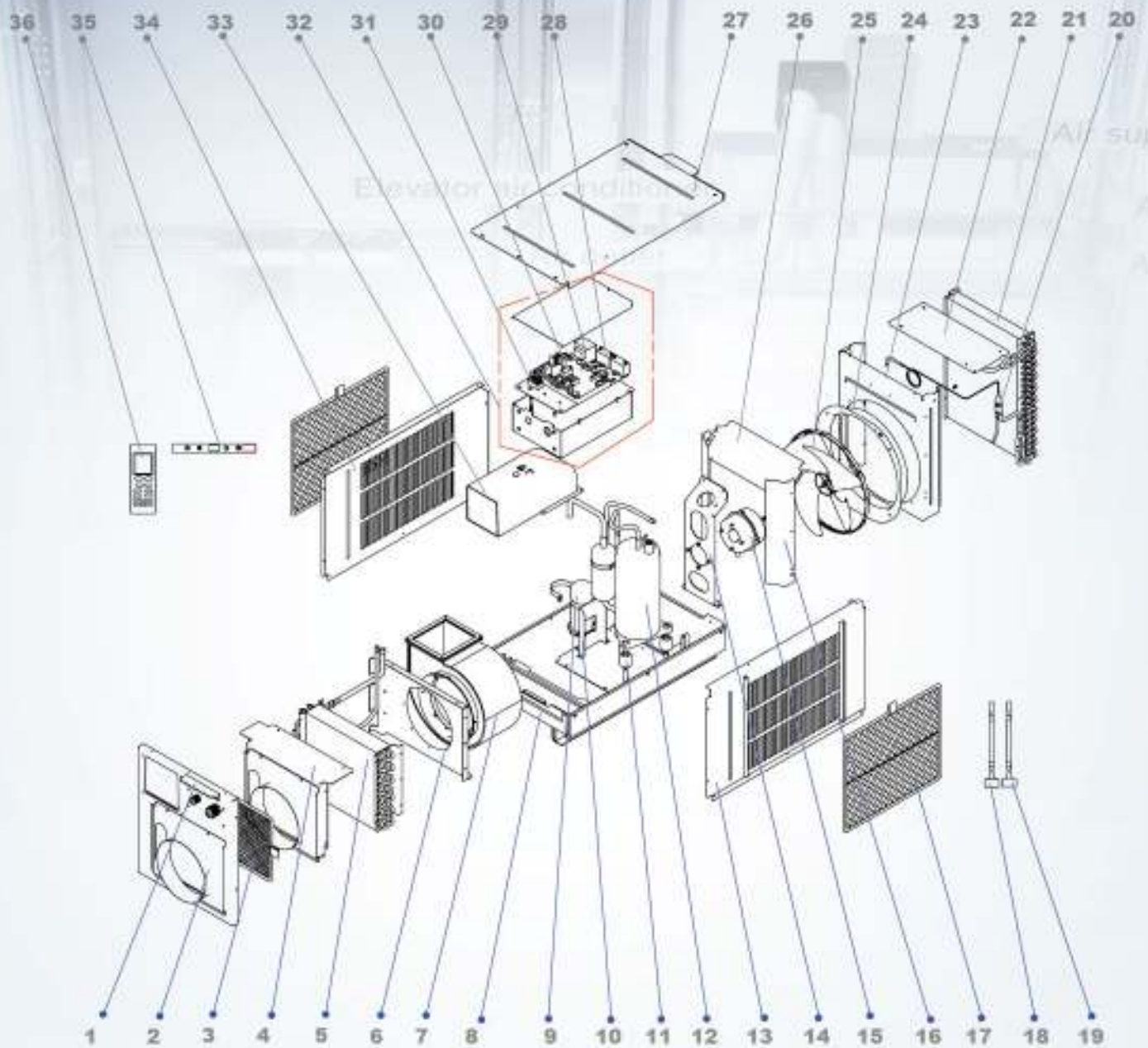
Fresh air supply



Flexible control



Model: GDT25,GDT35



1	handle	2	Front Cover Plate Assy	3	Filter Sub-Assy	4	Evaporator Seal Plate
5	Evaporator Assy	6	Mounting Plate	7	Motor For Centrifugal Fan Assy	8	Pedestal Parts Assy
9	Capacitor Box Assy	10	Support	11	Compressor Gasket	12	Compressor and Fittings
13	Right Side Plate Assy	14	Motor Support Assy	15	Motor	16	Baffle Plate
17	Filter Sub-assy	18	Tube Sensor	19	Tube Sensor	20	Fork Tube Filter
21	Condenser Assy	22	Condenser Cover	23	Rear Isolation Sheet	24	Flow-guide Loop
25	Axial Flow Fan	26	Baffle Plate	27	Top Cover Sub-Assy	28	Capacitor CBB61
29	Transformer	30	Main Board	31	Terminal Board	32	Electric Box Assy
33	Air Scroll	34	Left Side Plate Assy	35	Display Board	36	Remote Controller